

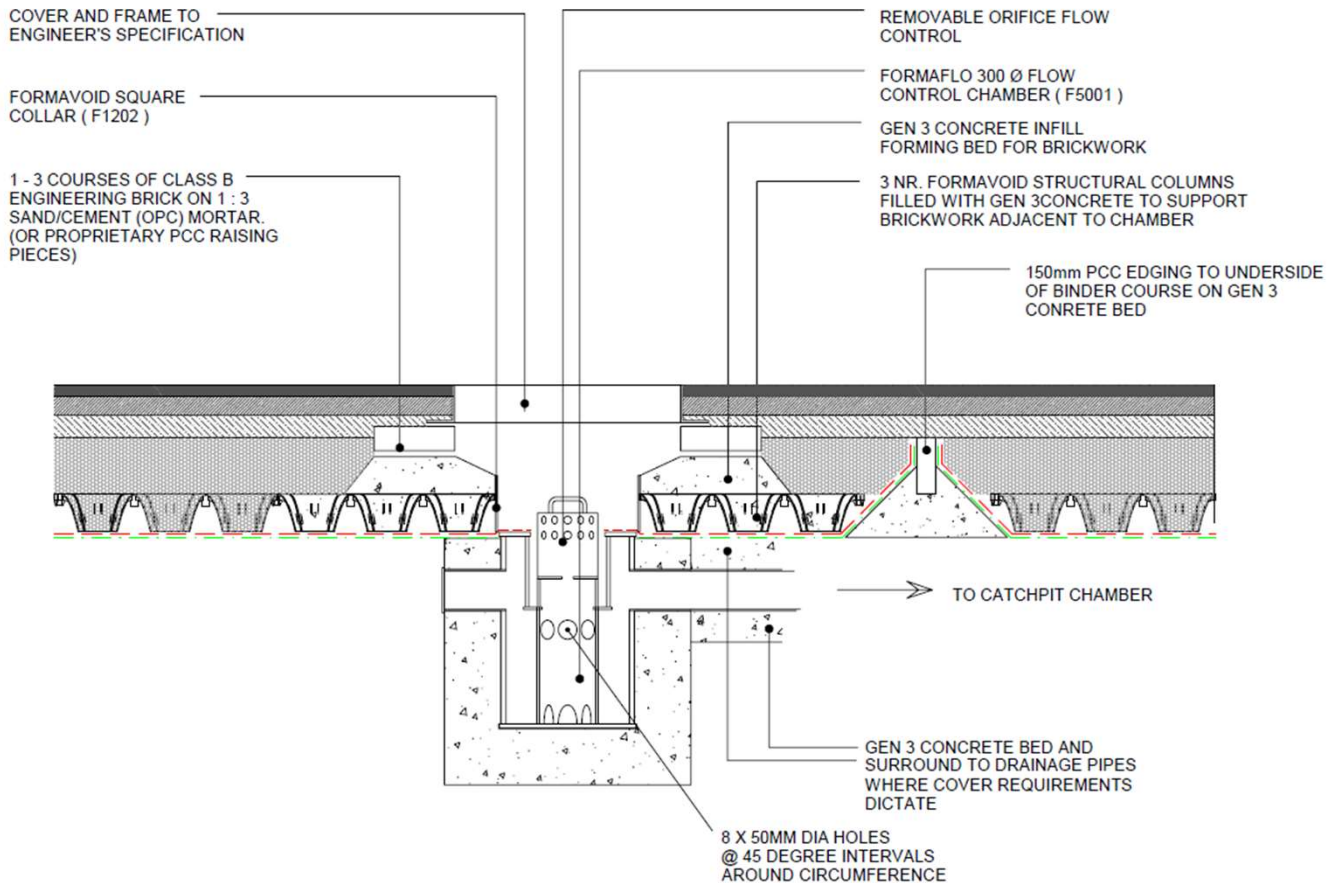
FORMAFLO flow control

PRODUCT INFORMATION - F5001



INTRODUCTION

The Formaflo flow control chamber is specially developed to control water discharge from a Formavoid raft using an upstream protected, removable orifice plate. The chamber is fully accessible for maintenance and situated below formation, terminating at formation level with a convenient rim for sealing membrane to. Stormwater flows directly from the Formavoid raft into the open top chamber, acting like a plughole.



FORMAFLO flow control

Product Code	F5001
Material	High Density Polyethylene
Diameter	300mmØ
Depth	525mm
Sump Depth	300mm
Nr Connection Spigots	2
Connection Spigot Diameter	110mm & 160mm
Orifice Type	Upstream Protected & Removable Plate

FORMAFLO flow control

PRODUCT INFORMATION – F5001

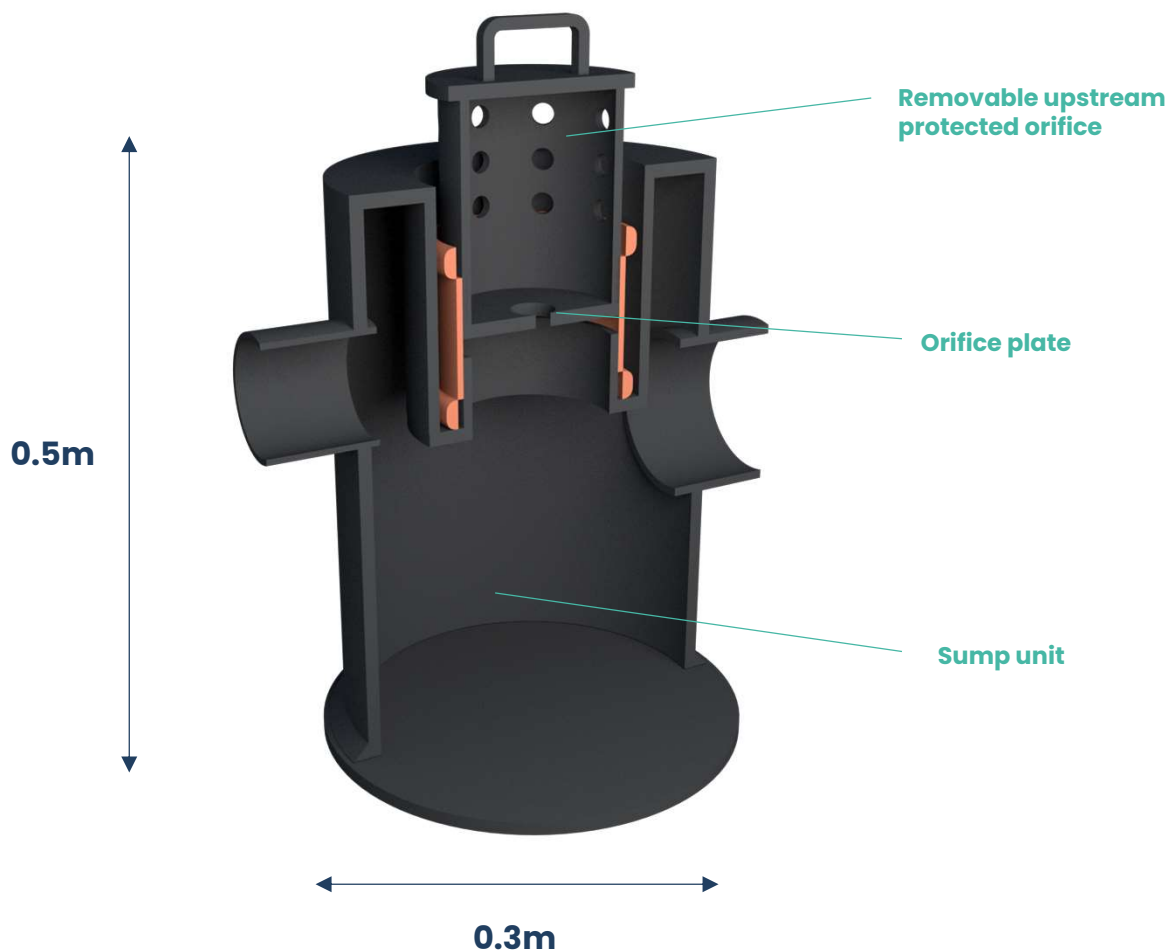


MAINTENANCE

It is recommended to inspect Formaflo flow control chambers at least every three months, and when standing water is present for prolonged period of time.

Appropriate removal/remedial action should be taken if excess silts or debris are identified during inspection.

Further to the above, it is recommended to evacuate chambers every 12 months.



- ✓ Fully compatible with the standard range of Formaliner impermeable geomembrane liners.
- ✓ Compatible with Formavoid raft design.

Last Revised January 2025

Forma Systems Ltd will not be held liable if our products are used in a manner inconsistent with our requirements, standards or the purposes indicated in the standards. This document does not give nor imply warranty for the intended use. This document may be modified without prior notice.